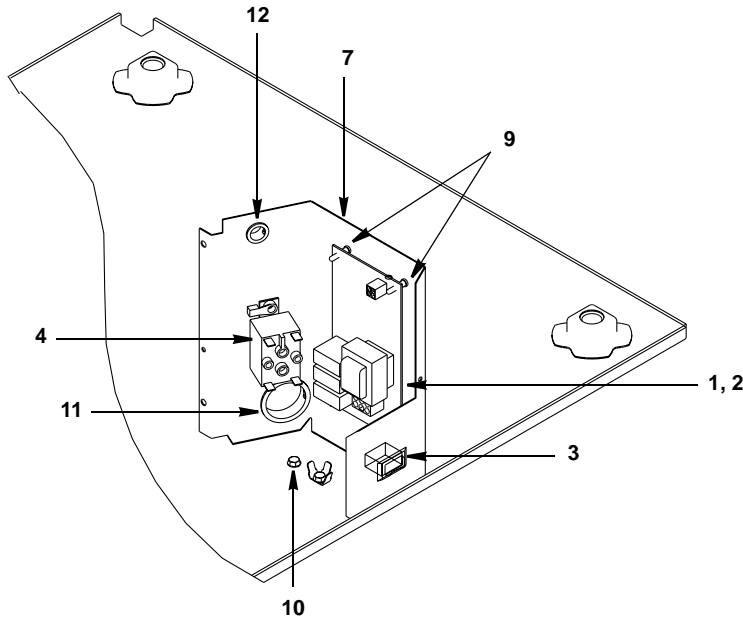


# ECV100 CONTROL BOX

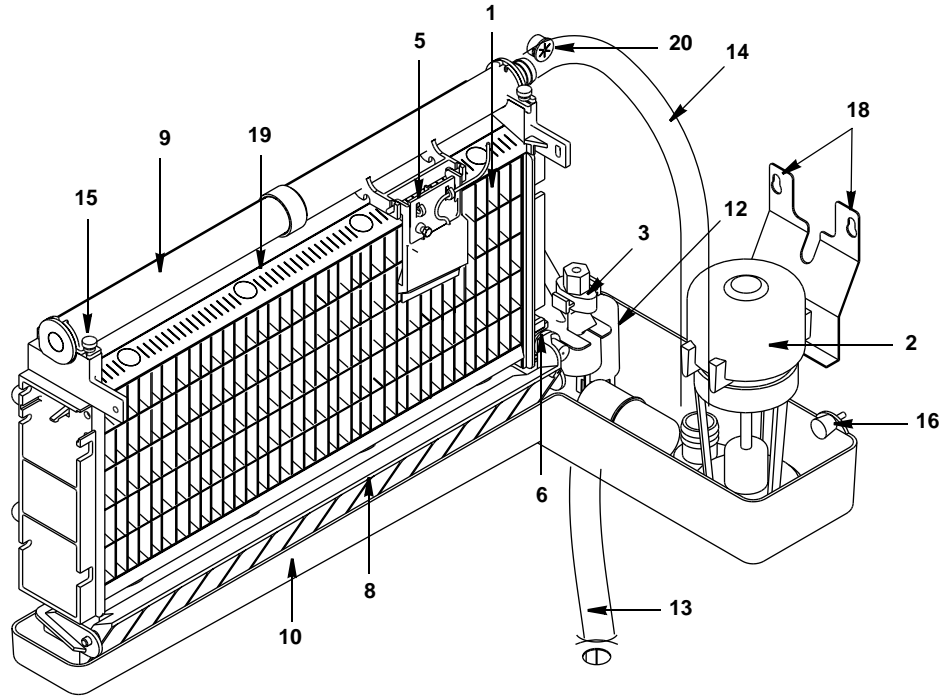


pt1262

## DESCRIPTION

	<b>PART NO.</b>
1 Control Board (for use with all voltages) . . . . .	† 76-2907-3
2 10 Amp Fuse – Mounted on Control Board . . . . .	25-1149-3
3 <b>Toggle Switch</b> Only . . . . .	23-0151-3
a. Wiring Harness for Toggle Switch . . . . .	20-3248-3
4 Contactor . . . . .	
a. 115V/60 Hz/1 Ph. . . . .	76-0083-3
b. 230V/50/60 Hz/1 Ph . . . . .	76-0084-3
5 <b>Wiring Harness</b> . . . . .	
a. Air-Cooled (Not shown) . . . . .	20-3246-3
b. Water-Cooled (Not shown) . . . . .	20-3271-3
c. Ice Thickness Control Probe (Wire Lead and Connectors Only) . . . . .	20-0701-3
Ice Thickness Control Probe (Wire Lead and Connectors Only) . . . . .	76-0160-3
6 <b>Power Cord</b> . . . . .	
a. 125V/60 Hz (Not shown) . . . . .	20-3266-3
b. 230V/60 Hz (Not shown) . . . . .	20-3270-3
c. 230V/50 Hz (Not shown) . . . . .	20-3269-3
<b>Miscellaneous – Brackets, Screws, etc.</b>	
7 Control Box . . . . .	† 604693-1
8 Control Box Cover (Not shown) . . . . .	76-2908-3
9 Control Board Mounting Supports . . . . .	43-0225-3
10 Screw, #10-24 x .50 Ground . . . . .	52-0224-3
11 Bushing . . . . .	† 25-0013-9
12 Bushing . . . . .	† 25-0218-9

# ECV100 EVAPORATOR COMPARTMENT

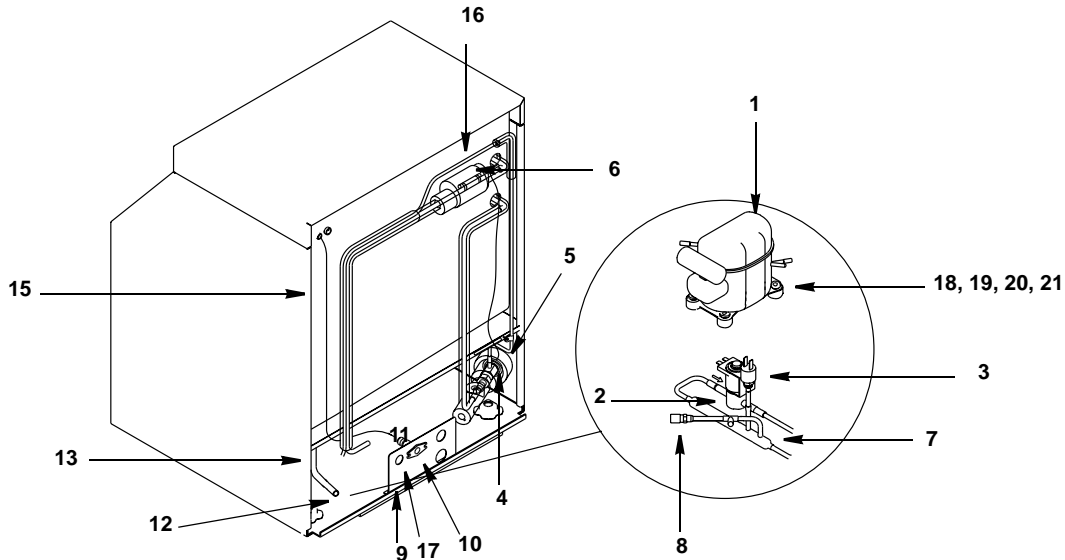


pt1258

## DESCRIPTION

		<b>PART NO.</b>
1	<b>Evaporator Assembly</b>	
	a. Regular Cube . . . . .	† 76-2954-9
	b. Dice Cube . . . . .	† 76-2955-9
	c. Half Dice Cube . . . . .	† 76-2956-9
2	<b>Water Pump</b>	
	a. 115V/60 Hz . . . . .	† 76-2306-3
	b. 208-230V/60 Hz or 230V/50 Hz . . . . .	† 76-2601-3
3	<b>Float Valve (Complete Assembly) - Up to Serial Number 031100000</b>	† 76-0213-3
4	<b>Float Valve (Complete Assembly) - After Serial Number 031100000</b>	83-6904-9
	a. Float Valve Screen . . . . .	† 83-6906-9
	b. Float Valve Plunger . . . . .	† 83-6908-9
	c. Float Valve Compression Nut . . . . .	† 56-5072-9
5	Ice Thickness Control Probe . . . . .	† 76-0160-3
6	Magnetic Bin Switch (Mounted to Evaporator) . . . . .	† 23-0148-3
7	Water Flow Clamp (Not shown) . . . . .	76-2054-3
8	Ice Damper . . . . .	† 76-0048-3
	a. Ice Damper Magnet and Cap . . . . .	76-2909-3
9	Water Distribution Tube . . . . .	† 76-2498-3
10	Water Trough . . . . .	43-0386-3
11	Water Inlet Tubing (Not shown) . . . . .	44-2029-1
12	Siphon Cap . . . . .	43-0222-3
<b>Miscellaneous – Brackets, Screws, etc.</b>		
13	Drain Tube . . . . .	† 76-0085-3
14	Tubing (Water Pump Out) . . . . .	40-1205-3
15	Screw, #8-32 x .63 Nylon Water Distribution Tube Mounting . . . . .	† 50-0001-3
16	Thumbscrew, #8-32 x .625 . . . . .	53-0510-3
17	Screw, #10-24 x .750 – Used to Mount Evaporator (Not shown) . . . . .	† 52-0218-9
18	Screw, #10-24 x .50 . . . . .	† 52-0206-9
19	Evaporator Top Molding and Gasket Assembly . . . . .	76-2621-3
20	Bushing (Ice Thickness Probe Wire) . . . . .	† 25-0016-9
21	Water Pump Lead (Not Shown) . . . . .	20-7806-3

# ECV100 REFRIGERATION COMPARTMENT – COMMON PARTS

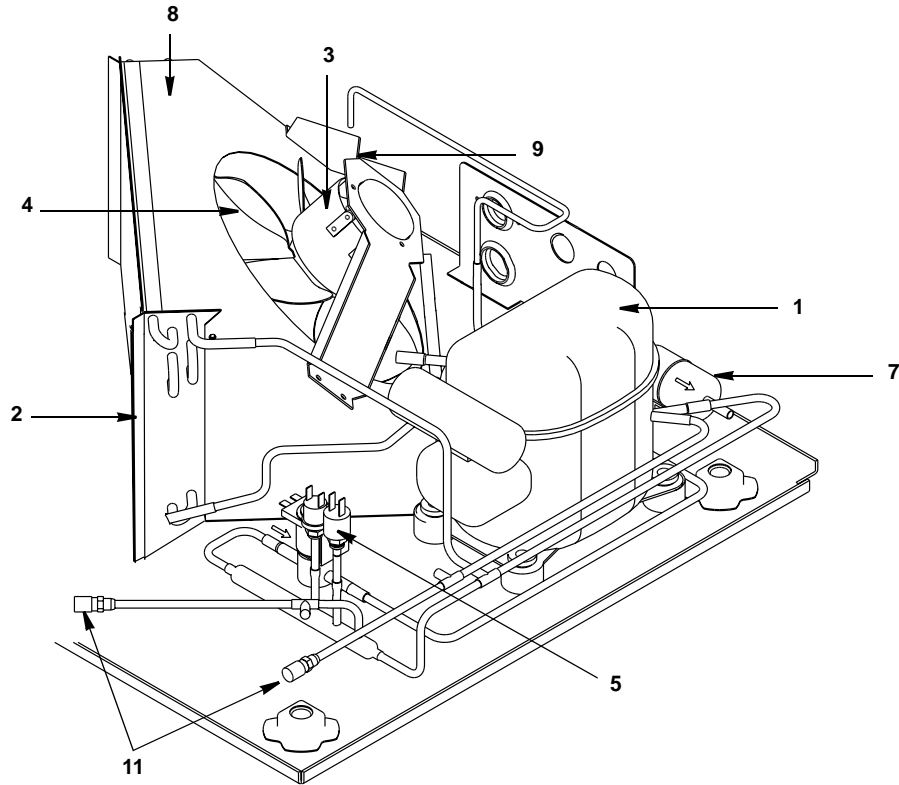


pt1259

## DESCRIPTION

	DESCRIPTION	PART NO.
1	<b>Compressor</b>	
a.	115V/60 Hz/1 Ph (Tecumseh) . . . . .	† 76-2910-3
	Overload for Compressor . . . . .	85-0562-3
	Starting Device (Tecumseh) . . . . .	85-0565-3
	Start Capacitor (Tecumseh) . . . . .	85-0580-3
b.	115V/60 Hz/1 Ph (Danfoss) . . . . .	76-0132-3
	Starting Device (Danfoss) . . . . .	20-0204-3
	Start Capacitor (Danfoss) . . . . .	20-0203-3
c.	208/230V 60 Hz/1 Ph (Tecumseh) . . . . .	† 76-2911-3
	Overload for Compressor . . . . .	85-0576-3
	Starting Device (Tecumseh) . . . . .	85-0566-3
	Start Capacitor (Tecumseh) . . . . .	85-0580-3
d.	208/230V 60 Hz/1 Ph (Danfoss) . . . . .	76-0133-3
	Starting Device (Danfoss) . . . . .	20-0487-3
	Start Capacitor (Danfoss) . . . . .	20-0486-3
e.	224/240V 50 Hz/1 Ph (Tecumseh) . . . . .	† 76-2912-3
	Overload for Compressor . . . . .	85-0564-3
	Starting Device (Tecumseh) . . . . .	† 85-0567-3
	Start Capacitor (Tecumseh) . . . . .	85-0581-3
f.	224/240V 50 Hz/1 Ph (Danfoss) . . . . .	76-0133-3
	Starting Device (Danfoss) . . . . .	20-0487-3
	Start Capacitor (Danfoss) . . . . .	20-0486-3
2	<b>Hot Gas Valve</b>	
a.	Hot Gas Valve Including 115V 60 Hz Electrical Coil (Danfoss) . . . . .	† 76-3000-1
b.	Hot Gas Valve 115V Coil Only Danfoss . . . . .	20-0176-3
c.	Hot Gas Valve 115V Coil Only Alco . . . . .	24-0436-3
d.	Hot Gas Valve Including 208/230V 50/60 Hz Electrical Coil (Danfoss) . . . . .	† 76-3006-1
e.	Hot Gas Valve 208/230V 50/60 Hz Coil Only Danfoss . . . . .	20-0177-3
f.	Hot Gas Valve 208/230V 50/60 Hz Coil Only Alco . . . . .	† 24-0448-3
3	High Pressure Cut-out . . . . .	† 20-0124-3
4	Expansion Valve . . . . .	† 76-0017-3
5	Expansion Valve Body Insulation Boot	
a.	Alco . . . . .	40-0721-3
b.	Danfoss . . . . .	40-0036-3
6	Expansion Valve Bulb Insulation Boot . . . . .	40-0720-3
7	Manifold Strainer (in front of hot gas valve) . . . . .	83-1016-3
8	Access Valve . . . . .	83-7325-3
	<b>Miscellaneous – Brackets, Screws, etc.</b>	
9	Bracket (Water/Electrical Inlet) . . . . .	602682-1
10	Water Inlet Female Wing Adapter . . . . .	† 87-0609-3
11	Male Connector 1/4" OD x 1/8" NTPF . . . . .	13-6096-1
12	Bin Drain Female Wing Adapter after Serial Number 980860665 . . . . .	87-0608-3
13	Bin Drain Tubing (Molded)	
a.	Up To Serial Number 980860665 . . . . .	44-2085-3
b.	After Serial Number 980860665 . . . . .	44-2098-3
14	Bin Drain Hose Clamp (Not shown) . . . . .	† 56-5064-9
15	Water Inlet Tubing .375 ID . . . . .	44-2029-1
16	Clamp, Expansion Valve Bulb . . . . .	† 56-5052-9
17	Screw, #10-24 x .50 . . . . .	† 52-0206-9
18	Compressor Mounting Rubber Grommet . . . . .	† 85-0306-9
19	Compressor Mounting Washer . . . . .	† 55-7309-9
20	Compressor Hex Head Cap Screw . . . . .	† 50-3770-9
21	Compressor Mounting Sleeve 3/8" ID x 1.031 . . . . .	† 85-0394-9

# ECV100 REFRIGERATION COMPARTMENT – AIR-COOLED

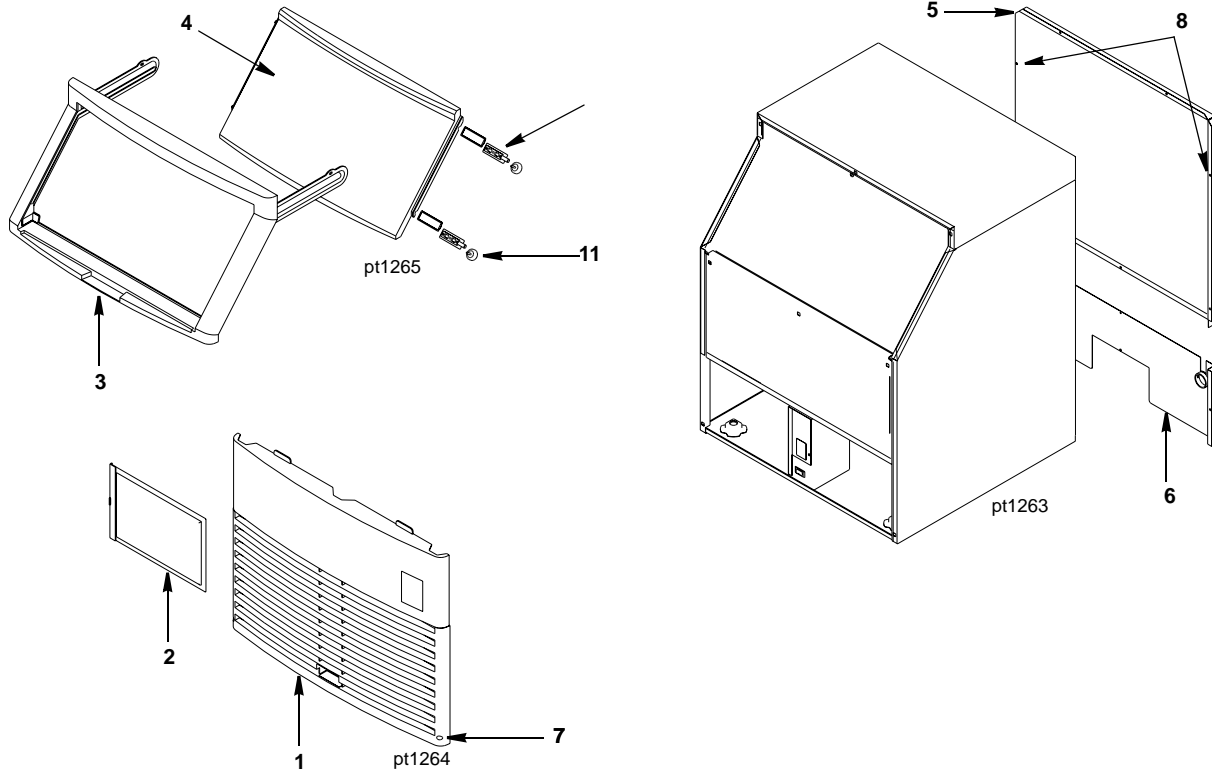


pt1261

## DESCRIPTION

	<b>PART NO.</b>
1 Compressor (Refer to COMMON PARTS Page) .....	Page 4
2 Air Condenser.....	88-5132-3
3 <b>Fan Motor</b>	
a. 115V .....	24-1308-9
b. 208-230V/60 Hz or 230V/50 Hz .....	24-1309-9
4 Fan Blade .....	24-1624-3
5 Fan Cycling Control .....	† 20-0127-3
6 Air Filter (Not shown) .....	76-2914-3
7 Drier .....	† 89-3025-9
<b>Miscellaneous – Brackets, Screws, etc.</b>	
8 Fan Shroud .....	602685-1
9 Fan Motor Mounting Bracket .....	602743-1
10 Speed Nut to Mount Fan Blade (Not shown) .....	† 54-7507-9
11 Access Valve.....	83-7325-3

# ECV100 PANELS



## DESCRIPTION

	<b>DESCRIPTION</b>	<b>PART NO.</b>
1	Front Panel Assembly .....	76-2915-3
2	Air Filter .....	76-2914-3
3	Door Frame Assembly .....	76-2916-3
4	Bin Door* .....	† 43-0456-3
5	Back Panel, Upper .....	602680-1
6	Back Panel, Lower .....	
	a. Up To Serial Number 980860665 .....	602717-1
	b. After Serial Number 980860665 .....	603350-1
<b>Miscellaneous – Brackets, Screws, etc.</b>		
7	Front Cover Screw .....	† 52-0223-9
8	Screw, #10-24 x .50 .....	† 52-0206-9
9	Ice Scoop (Not shown) .....	† 33-0260-3
10	Door Pin Gasket and Door Pin Assembly .....	76-2917-3
11	Door Pin Thumbscrews .....	50-1235-3